



**NORTH COAST RAILROAD AUTHORITY
RUSSIAN RIVER DIVISION
CONTINGENCY PLAN AND
EMERGENCY PROCEDURES
FOR
MANAGEMENT OF HAZARDOUS MATERIALS/WASTE**

Prepared for:



Prepared by:



**2240 Northpoint Parkway
Santa Rosa, California 95407**

November 2009



This page left blank intentionally



A Report Prepared for:

North Coast Railroad Authority
419 Talmage Road, Suite M
Ukiah, California 95482
Phone: (707) 463-3280

**CONTINGENCY PLAN AND
EMERGENCY PROCEDURES FOR
MANAGEMENT OF HAZARDOUS MATERIALS/WASTE
NORTH COAST RAILROAD AUTHORITY
RUSSIAN RIVER DIVISION
FREIGHT RAIL PROJECT**

Kleinfelder Project No. 78207

A handwritten signature in black ink that reads "Maya Rohr".

Maya Rohr
Senior Project Manager

A handwritten signature in blue ink that reads "Bradley G. Erskine".

Bradley G. Erskine, Ph.D.
Area Manager

Prepared by:



**2240 Northpoint Parkway
Santa Rosa, California 95407**

November 2009



This page left blank intentionally



CONTINGENCY PLAN AND EMERGENCY PROCEDURES FOR MANAGEMENT OF HAZARDOUS MATERIALS/WASTE

TABLE OF CONTENTS

<u>Section</u>	<u>Page</u>
1.0 INTRODUCTION.....	1-1
1.1 PURPOSE.....	1-1
1.2 RAILROAD OPERATIONS.....	1-1
1.3 AMENDMENT OF CONTINGENCY PLAN.....	1-3
1.4 DISTRIBUTION OF THE CONTINGENCY PLAN	1-4
2.0 EMERGENCY RESPONSE ROLES AND RESPONSIBILITIES.....	2-1
2.1 IMPLEMENTATION.....	2-1
2.2 CHAIN OF COMMAND	2-1
2.3 EMERGENCY COORDINATOR'S RESPONSIBILITIES AND GENERAL EMERGENCY PROCEDURES	2-1
3.0 SPECIFIC RESPONSE PROCEDURES	3-1
3.1 EMERGENCY PROCEDURE IN CASE OF FIRES.....	3-1
3.2 EMERGENCY RESPONSE PROCEDURES IN CASE OF PERSONAL INJURY.....	3-1
3.3 EMERGENCY RESPONSE PROCEDURES IN CASE OF EARTHQUAKE	3-2
3.4 EMERGENCY RESPONSE PROCEDURES IN CASE OF SPILLAGE OR DISCHARGE OF HAZARDOUS WASTES OR HAZARDOUS MATERIALS	3-2
4.0 EMERGENCY EQUIPMENT	4-1
4.1 FIRE RESPONSE	4-1
4.2 PERSONAL PROTECTIVE EQUIPMENT.....	4-1
4.3 SAFETY AND DECONTAMINATION STATIONS.....	4-1
4.4 SPILL CONTROL EQUIPMENT	4-1
4.5 COMMUNICATION EQUIPMENT	4-2
4.6 EMERGENCY MEDICAL SUPPLIES.....	4-2
4.7 EMERGENCY LIGHTING	4-2
4.8 WATER SUPPLY	4-2
4.9 INSPECTION AND MAINTENANCE OF EMERGENCY EQUIPMENT	4-2
5.0 EVACUATION PLAN.....	5-1
5.1 SIGNALS.....	5-1
5.2 EVACUATION OF FACILITY PERSONNEL	5-1
6.0 ADDITIONAL RAILROAD SAFETY REQUIREMENTS	6-1

TABLE

Table 6-1	Emergency Response Contact Information.....	6-2
-----------	---	-----

FIGURES

Figure 1-1	Rail Corridor and Location of Maintenance Areas.....	1-5
Figure 2-1	Willits Yard Hospital Route	2-5
Figure 2-2	Cloverdale Maintenance Facility Hospital Route	2-6
Figure 2-3	Schellville Maintenance Area Hospital Route.....	2-7



CONTINGENCY PLAN AND EMERGENCY PROCEDURES FOR MANAGEMENT OF HAZARDOUS MATERIALS/WASTE

This page left blank intentionally



1.0 INTRODUCTION

1.1 PURPOSE

The purpose of the Contingency Plan and Emergency Procedures for the Management of Hazardous Materials/Waste (Plan) is to minimize the hazards to human health and the environment from fire, or any unplanned sudden or non-sudden release of hazardous wastes or materials to air, soil or surface water. The provisions of the Plan will be carried out immediately whenever there is a fire or release of hazardous waste which could threaten human health and/or the environment.

1.2 RAILROAD OPERATIONS

The Northwestern Pacific (NWP) rail line has provided rail service dating back to the late 1800's. The Russian River Divisions (RRD) of the NWP rail line is approximately 142 miles long extending from Willits in Mendocino County, California to Lombard, Napa County, California. This rail line runs parallel to U.S. Highway 101 corridor through Mendocino, Sonoma, Marin, and Napa counties to Novato, California. At Ignacio, south of Novato, the rail line runs east/west along CA Highways 37 and 121 near the north shore of San Pablo Bay, to Lombard, north of the City of American Canyon, where the NWP rail line connects to the currently operating California Northern Railroad (Cal Northern).

NCRA provides general freight service to the communities within the rail corridor (Figure 1-1). Solid waste may also be transported to landfills beyond the four-county area, eventually replacing the diesel trucks currently used for this service. The freight service does not accept for transport hazardous waste, dangerous, highly flammable or explosive material.

The rail line within the RRD consists of one mainline track and sidings. The existing sidings are strategically placed along the mainline for train meets (train passing), temporary rail car storage, and to provide a means to transfer freight cars between the NCRA operator and Cal Northern at Lombard.



CONTINGENCY PLAN AND EMERGENCY PROCEDURES FOR MANAGEMENT OF HAZARDOUS MATERIALS/WASTE

1.0 INTRODUCTION

The current start up phase of reestablishing freight service operation consists of three round trips per week (three north bound and three south bound). The initial number of cars per train is approximately fifteen cars on average.

As the freight service becomes established, the number of trains will increase to two round trips per day (two north bound and two south bound), six days a week. The number of cars per train is estimated to be 25 cars for one round trip and 60 cars for the other round trip. The 60-car train will travel between Willits and Lombard. The other train will initiate with 10 cars in Willits and increase to up to 25 cars from Redwood Valley to Lombard.

Reestablishing freight service in the region may involve the addition of a train providing solid waste hauling services for the area. A train may run from Santa Rosa to the Cal Northern connector at Lombard. (Currently, the disposition of the county's solid waste is in a state of flux. The county is considering divesting itself of its solid waste assets when the current county hauling contracts expires. Accordingly, whether rail will ultimately be involved in the disposition of the county's solid waste is uncertain at this time.)

The solid waste service will likely involve one round trip per day (one north bound and one south bound), six days a week. The number of cars per train is estimated to be 60 cars. The railroad operator will load and unload solid waste (in closed containers) from highway trailers to railroad flat cars using sidings and portable ramps.

Major repairs or major maintenance activities will not be conducted within the RDD right-of-way. The operator will contract with existing facilities outside the RDD right-of-way for these activities. The following facilities are the only locations where light running maintenance, light repairs and switching will routinely be conducted (Figure 1-1):

- Willits yard;
- Cloverdale maintenance facility; and
- Schellville maintenance area.



CONTINGENCY PLAN AND EMERGENCY PROCEDURES FOR MANAGEMENT OF HAZARDOUS MATERIALS/WASTE

1.0 INTRODUCTION

Note that the Schellville area serves the line during the introductory startup phase, while Cloverdale and Willits will be added as the service moves northward.

Light running maintenance and light repairs include minor servicing activities such as brake repair, minor engine repair, oil changes, and other standard scheduled servicing tasks. Servicing activities may involve storage and handling of relatively small amounts of petroleum-based materials, particularly oil, waste oil, grease, cleaning solutions/solvents, paints and small amounts of diesel fuel. These materials are stored, handled, and disposed of in accordance with applicable regulations, and requirements.

Track work typically involves rail removal and replacement, removal and replacement of deteriorated ties, grading and replacement of lost ballast and soil substructures and removal of vegetation (brushing) that has encroached within 15 feet of the centerline of the railroad. The work is typically conducted from the rail with rail-mounted equipment or from within the railroad right-of-way or access. If work is required in wetlands, Waters of the U.S. or State of California, or other environmentally sensitive areas, the appropriate approvals and permits shall be obtained from the regulatory agencies. NCRA's Best Management Practices (BMPs) shall be employed to minimize the effects of this work.

1.3 AMENDMENT OF CONTINGENCY PLAN

The Plan will be revised if needed for the reasons noted below:

- Applicable regulations are revised;
- The Plan fails in an emergency;
- The rail service is modified in a way that materially increase the potential for fires, explosions, or releases of hazardous wastes or hazardous wastes constituents, or changes the response necessary in an emergency;
- The lists of emergency, safety, technical personnel changes;
- The lists of emergency equipment changes;
- Emergency Coordinator telephone number changes.



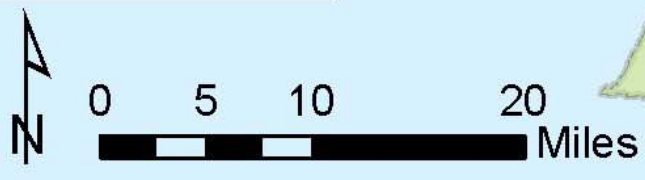
1.4 DISTRIBUTION OF THE CONTINGENCY PLAN

A copy of the Plan will be maintained in the following locations:

- NCRA office;
- NCRA's contract operator's office;
- Willits yard (when operational);
- Cloverdale maintenance facility (when operational); and
- Schellville maintenance area.



Legend
 — Rail Line



PROJECT NO.	78207
DRAWN:	9/08/09
DRAWN BY:	IPM
CHECKED BY:	SEK
FILE NAME:	Figure 1

RAIL CORRIDOR AND LOCATION OF MAINTENANCE AREAS

NORTH COAST RAILROAD AUTHORITY
 RUSSIAN RIVER DIVISION
 FREIGHT RAIL PROJECT

FIGURE

1-1



CONTINGENCY PLAN AND EMERGENCY PROCEDURES FOR MANAGEMENT OF HAZARDOUS MATERIALS/WASTE

2.0 EMERGENCY RESPONSE ROLES AND RESPONSIBILITIES

2.0 EMERGENCY RESPONSE ROLES AND RESPONSIBILITIES

2.1 IMPLEMENTATION

Whenever there is an imminent or actual emergency situation such as fire or the spillage or discharge of a volume of waste material which could be deemed a threat to individuals or the environment, this Plan will be implemented.

2.2 CHAIN OF COMMAND

The chain of command for responsibilities and supervision of the Plan is as follows:

- **Individual Employees (NCRA and contract employees):** Report all emergencies by immediately contacting the site work supervisor or maintenance facility manager. If the emergency is life threatening or requires immediate evacuation, notify all employees via radios or cell phones.
- **Site Work Supervisor and Maintenance Facility Manager:** If the emergency is life threatening or requires immediate evacuation, notify all employees if not already done by an employee. Contact appropriate emergency response agencies. Next, contact the Emergency Coordinator. Conduct headcount if employees are evacuated. Maintain control of the situation until the Emergency Coordinator arrives.
- **Emergency Coordinator:** Ensure the appropriate emergency response agencies are contacted. Supervise emergency response. Determine need for contact with regulatory agencies, as applicable.

2.3 EMERGENCY COORDINATOR'S RESPONSIBILITIES AND GENERAL EMERGENCY PROCEDURES

The Emergency Coordinator is the person responsible for coordinating all emergency response procedures as outlined in this Plan. The Emergency Coordinator shall be thoroughly familiar with all aspects of the Plan, all operations and activities of the railroad, all operations and activities at the maintenance facilities, the location and characteristics of hazardous materials and waste handled, the location of all records, and the emergency response providers. In addition, the Emergency Coordinator has



CONTINGENCY PLAN AND EMERGENCY PROCEDURES FOR MANAGEMENT OF HAZARDOUS MATERIALS/WASTE

2.0 EMERGENCY RESPONSE ROLES AND RESPONSIBILITIES

the authority to commit the necessary resources needed to carry out and implement the Plan. The primary Emergency Coordinator and his/her alternates telephone numbers, as well as the contact information for the emergency response agencies are listed in Table 6-1. Figures 2-1, 2-2 and 2-3 show the location of the closest medical facilities to the three maintenance facilities.

In response to any emergency, the Emergency Coordinator will:

- Ensure that appropriate emergency response agencies are notified if their help is needed. Determine if management notification is required and place calls.
- If there is a spill, discharge, or fire, immediately identify the character, exact source, and the extent of any release of hazardous materials.
- Assess the possible hazards to human health and the surrounding environment caused by the emergency.
- Take all necessary steps to ensure that fires and releases do not spread to other areas.
- If necessary, ensure the removal of any chemical or material which has not been affected by the emergency, but has a potential of being affected by the emergency if not removed.
- Ensure that the affected area will be cordoned off and will remain so until the cleanup is complete.
- If determined that the incident could threaten or has threatened human health or the environment outside the NCRA property, ensure that the applicable local authorities are notified and indicate if location evacuation is advised.
- As appropriate, relay an 'all clear' message to employees, enabling the resumption of activities in all but the affected area.
- Supervise the cleanup activities, ensuring that all hazardous wastes and contaminated materials are collected, stored and disposed of properly. Wastes incompatible with the released material should be stored away from the area affected by the release. If necessary, equipment in affected area should be cleaned before operations are resumed in that area.



CONTINGENCY PLAN AND EMERGENCY PROCEDURES FOR MANAGEMENT OF HAZARDOUS MATERIALS/WASTE

2.0 EMERGENCY RESPONSE ROLES AND RESPONSIBILITIES

- Equipment used for emergency response which is disposable, will be treated as a hazardous waste, if appropriate, and will be disposed of as such. Non-disposable equipment will be cleaned according to acceptable procedures, and will be re-tested to assure operation before being placed back into the proper location.
- Notify the appropriate federal, state and local authorities prior to resuming operations in the affected area.
- Follow up with the appropriate federal, state and local agencies with a written report the emergency event, if required. The written report should include the following:
 - a) Name, address and telephone number of the facility.
 - b) Date, time and type of incident (explosion, fire, release, etc.)
 - c) Name and quantity of material involved.
 - d) The extent of injuries or damage, if any.
 - e) An assessment of actual or potential hazards to human health or the environment.
 - f) Estimated quantity and disposition of recovered material that resulted from the incident; attach Hazardous Manifest Forms indicating final disposal of hazardous waste material.
- Conduct an investigation into the cause of the emergency, and recommend corrective action.



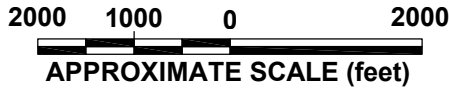
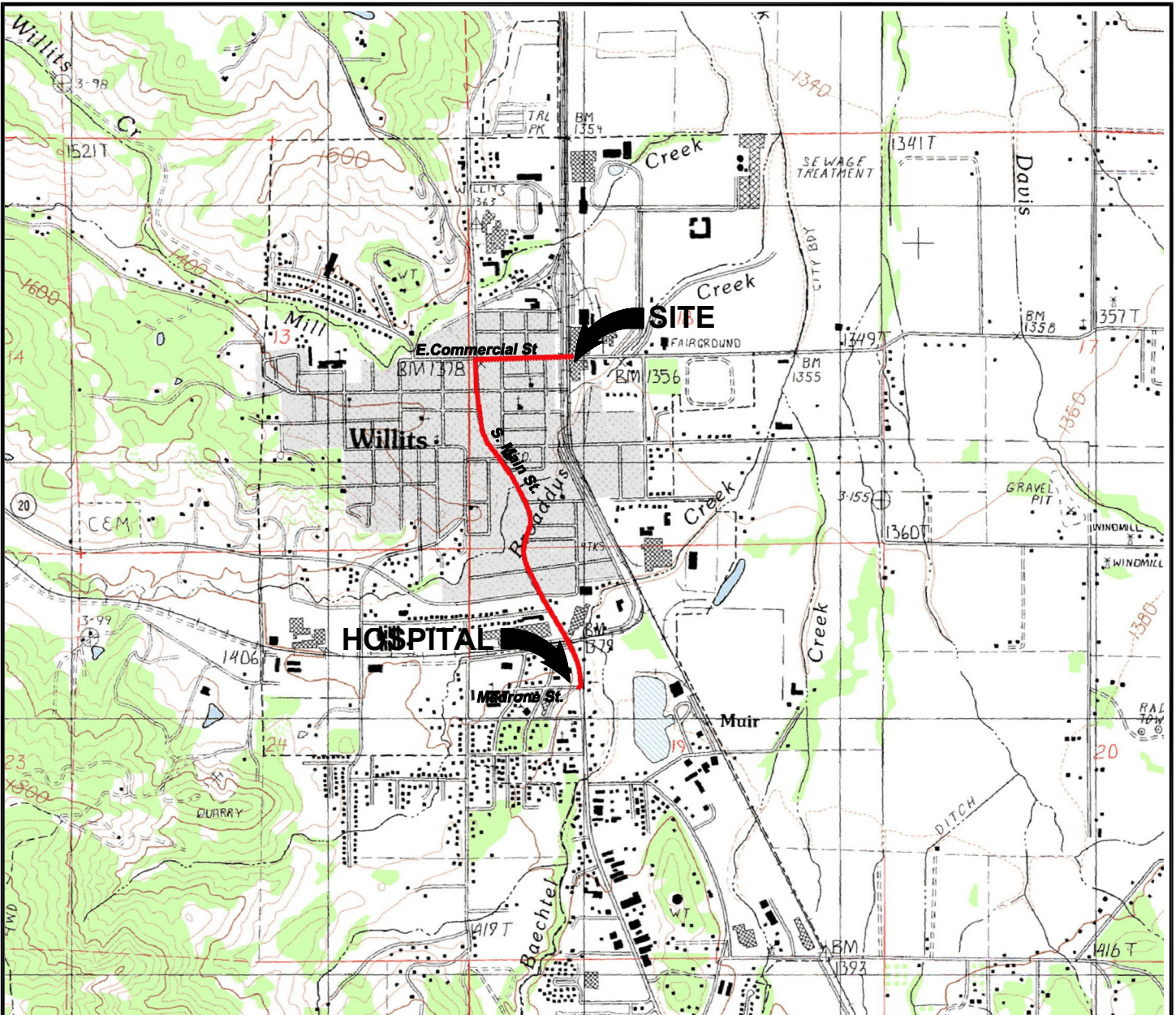
CONTINGENCY PLAN AND EMERGENCY PROCEDURES FOR MANAGEMENT OF HAZARDOUS MATERIALS/WASTE

2.0 EMERGENCY RESPONSE ROLES AND RESPONSIBILITIES

This page left blank intentionally

ATTACHED IMAGES: Images: SITE-VIC_W.jpg Images: site-vic_clo.jpg Images: SITE-VIC_S.jpg Images: SITEPLAN.jpg
 ATTACHED XREFS: XRef: Eng-A_8x11_P_StyleA.W: XRef: Eng-A_8x11_P_StyleA.S: XRef: Eng-A_8x11_P_StyleA_C
 PLEASANTON, CA CAD FILE: D:\PROJECTS\78207\1 LAYOUT: SITE-VIC.W

PLOTTED: 08 Sep 2009, 3:31pm, jsala



REFERENCE:
 USGS 7.5 Minute Series (Topographic) Willits,
 Quadrangle, dated 1991

The information included on this graphic representation has been compiled from a variety of sources and is subject to change without notice. Kleinfelder makes no representations or warranties, express or implied, as to accuracy, completeness, timeliness, or rights to the use of such information. This document is not intended for use as a land survey product nor is it designed or intended as a construction design document. The use or misuse of the information contained on this graphic representation is at the sole risk of the party using or misusing the information.

DRIVING DIRECTIONS:

- Begin at East Commerical Street
- Head west on E Commerical St. toward Main st.
- Turn left at S. Main St.
- Turn right at Madrone St.
- Destination : 1 Madrone St.

Hospital:

Frank R. Howard Memorial Hospital
 1 Madrone Street
 phone: 707-459-6801

Fire:

Willits Fire Department
 phone: 707-459-6271

Police:

Willits Police Department
 phone: 707-459-6122

Other numbers:

Sonoma County Department of
 Emergency Services: 707-565-1152
 Regional Emergency Dispatch
 (from your cell phone): 911



PROJECT NO.	78207
DRAWN:	SEPT 2009
DRAWN BY:	JDS
CHECKED BY:	SK
FILE NAME:	HOSPITAL.dwg

**WILLITS YARD
 HOSPITAL ROUTE**

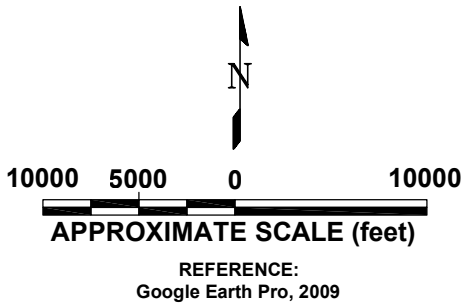
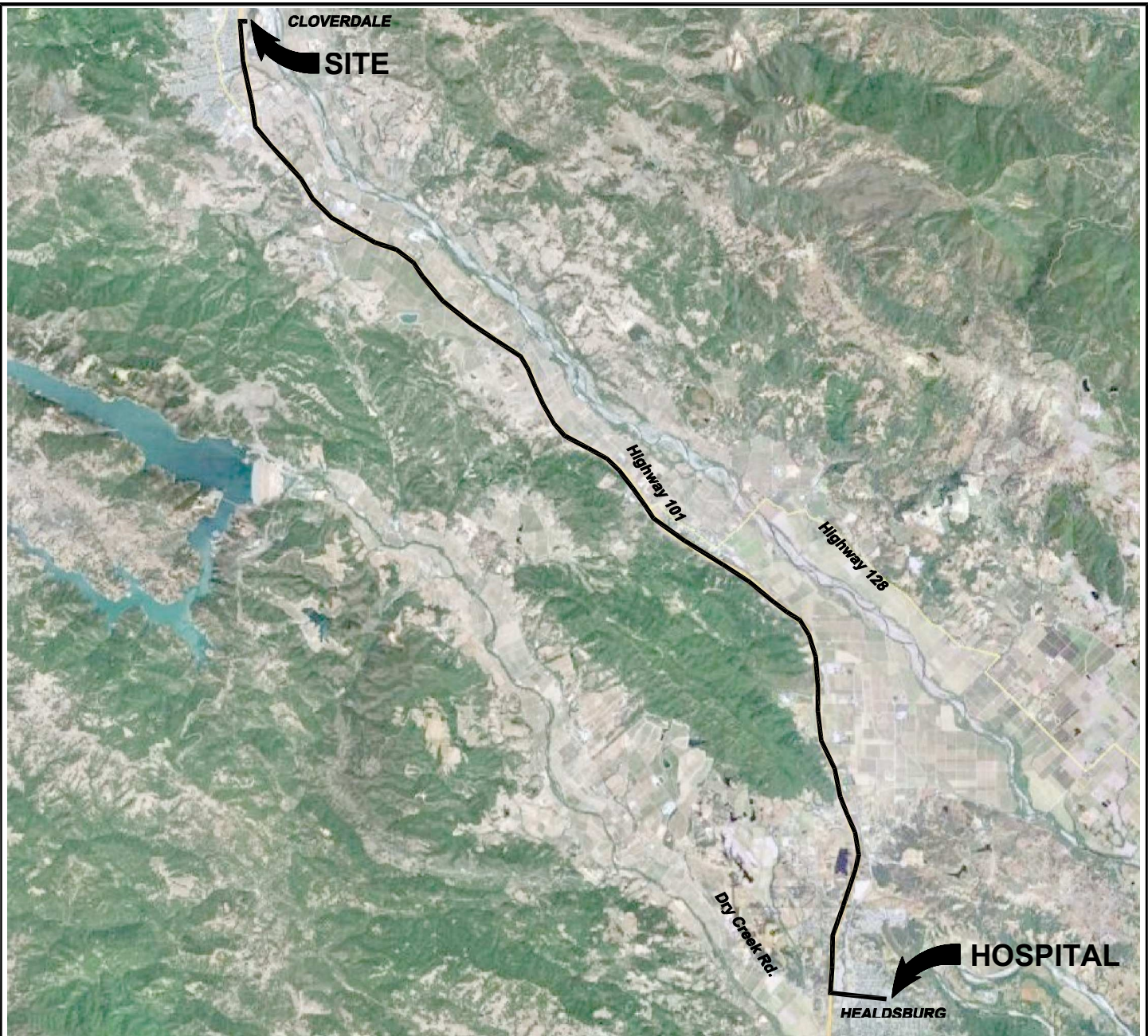
WILLITS YARD
 EAST COMMERCIAL STREET
 WILLITS, CALIFORNIA

FIGURE

2-1

ATTACHED IMAGES: Images: SITE-VIC_W.jpg Images: site-vic_clo.jpg Images: SITE-VIC_S.jpg Images: SITEPLAN.jpg
 ATTACHED XREFS: XRef: Eng-A_8x11_P_StyleA_W: XRef: Eng-A_8x11_P_StyleA_S: XRef: Eng-A_8x11_P_StyleA_C
 PLEASANTON, CA CAD FILE: D:\PROJECTS\178207\1 LAYOUT: SITE-VIC_C

PLOTTED: 08 Sep 2009, 3:31pm, jsala



The information included on this graphic representation has been compiled from a variety of sources and is subject to change without notice. Kleinfelder makes no representations or warranties, express or implied, as to accuracy, completeness, timeliness, or rights to the use of such information. This document is not intended for use as a land survey product nor is it designed or intended as a construction design document. The use or misuse of the information contained on this graphic representation is at the sole risk of the party using or misusing the information.

DRIVING DIRECTIONS:

Exit Maintenance Facility
 Turn right on Asti Rd toward Citrus Fair Dr.
 Right on Citrus Fair Dr.
 Take ramp left for US-101 South toward San Francisco
 continue 15.3 miles on US-101
 Take ramp right for Dry Creek Rd toward Healdsburg
 Turn left onto Dry Creek Rd
 Continue on March Avenue
 Turn left onto University St
Destination : 1375 University St

Hospital:
 Healdsburg District Hospital
 1375 University Street Healdsburg
 phone: 707-431-6500

Fire:
 Cloverdale Fire Protection District
 phone: 707-894-3545

Police:
 Cloverdale Police Department
 phone: 707-894-2150

Other numbers:
 Sonoma County Department of
 Emergency Services: 707-565-1152
 Regional Emergency Dispatch (from
 your cell phone): 911

PROJECT NO.	78207
DRAWN:	SEPT 2009
DRAWN BY:	JDS
CHECKED BY:	SK
FILE NAME:	HOSPITAL.dwg

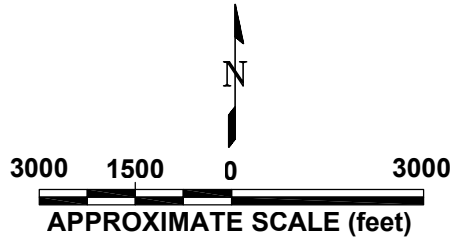
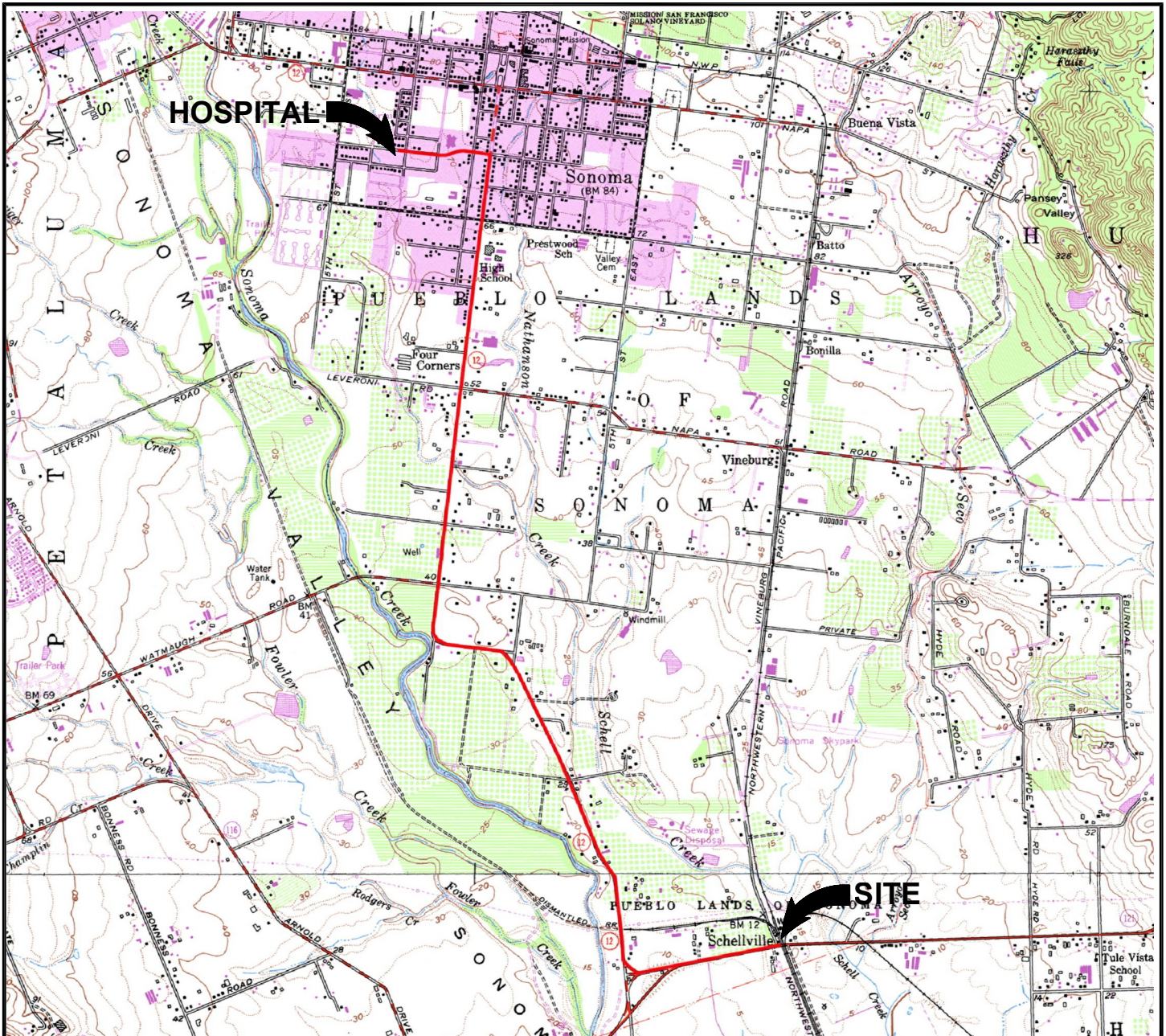
CLOVERDALE MAINTENANCE FACILITY HOSPITAL ROUTE

CLOVERDALE MAINTENANCE FACILITY
 ASTI ROAD & CITRUS FAIR DRIVE
 CLOVERDALE, CALIFORNIA

FIGURE
2-2

ATTACHED IMAGES: Images: SITE-VIC_W.jpg Images: site-vic_clo.jpg Images: SITE-VIC_S.jpg Images: SITEPLAN.jpg
 ATTACHED XREFS: XRef: Eng-A_8x11_P_StyleA_W: XRef: Eng-A_8x11_P_StyleA_S: XRef: Eng-A_8x11_P_StyleA_C
 PLEASANTON, CA CAD FILE: D:\PROJECTS\78207\1 LAYOUT: SITE-VIC_S

PLOTTED: 08 Sep 2009, 3:31pm, jsala



REFERENCE:
 USGS 7.5 Minute Series (Topographic) Sears Point
 Quadrangle, dated 1951 photorevised 1968 and
 Sonoma Quadrangle, dated 1951 photorevised 1980

The information included on this graphic representation has been compiled from a variety of sources and is subject to change without notice. Kleinfielder makes no representations or warranties, express or implied, as to accuracy, completeness, timeliness, or rights to the use of such information. This document is not intended for use as a land survey product nor is it designed or intended as a construction design document. The use or misuse of the information contained on this graphic representation is at the sole risk of the party using or misusing the information.

DRIVING DIRECTIONS:
 Begin at Fremont Dr. & 8th St. East
 Head west on CA-12/CA-121/Fremont Dr.
 Slight right at CA-12/Fremont Rd.
 Continue to follow CA-12
 Turn left at France St.
 Continue on Andrieux St.
 Destination: 347 Andrieux St.

Hospital:
 Sonoma Valley Hospital
 347 Andrieux St.
 phone: 707-935-5000

Fire:
 Sonoma Fire Department
 phone: 707-568-5933

Police:
 Sonoma Police Department
 phone: 707-996-3601

Other numbers:
 Sonoma County Department of
 Emergency Services: 707-565-1152
 Regional Emergency Dispatch (from
 your cell phone): 911

KLEINFELDER
 Bright People. Right Solutions.
 www.kleinfelder.com

PROJECT NO.	78207
DRAWN:	SEPT 2009
DRAWN BY:	JDS
CHECKED BY:	SK
FILE NAME:	HOSPITAL.dwg

SCHELLVILLE MAINTENANCE AREA HOSPITAL ROUTE
SCHELLVILLE MAINTENANCE AREA FREMONT DRIVE & 8th STREET EAST SONOMA, CALIFORNIA

FIGURE
2-3



3.0 SPECIFIC RESPONSE PROCEDURES

3.1 EMERGENCY PROCEDURE IN CASE OF FIRES

In the event of a fire, the following actions shall be taken as appropriate.

- The first employee or supervisor aware of a fire shall immediately notify all employees to evacuate. He/she shall also determine the nature, and source of the fire, to the extent he/she can do so without significant risk to himself/herself or others.
- The supervisor shall contact the police and fire department immediately.
- The supervisor shall then contact the Emergency Coordinator and conduct a headcount. The supervisor shall maintain control of the situation until the Emergency Coordinator arrives at the scene.
- The supervisor shall turn off all utilities (electricity, gas, etc.) to the affected area except for emergency equipment needs.
- The Emergency Coordinator shall:
 - a) Remove all nonessential personnel and equipment from the vicinity of the fire.
 - b) If the fire is relatively small, the supervisor or Emergency Coordinator shall utilize adequately trained personnel, and available equipment to control and/or extinguish any fire and to reduce the chance of further explosion. This includes use of fire extinguishers and water if appropriate. The cause of the explosion or fire shall be determined and corrected.
 - c) If the fire is large, the Emergency Coordinator shall keep the area clear and wait for the fire department.

3.2 EMERGENCY RESPONSE PROCEDURES IN CASE OF PERSONAL INJURY

Should a person be injured for any reason, including fire or hazardous waste release, immediately perform the following steps:

- Determine the cause and extent of the injury and apply first aid and/or decontamination if appropriate and trained to do so.



CONTINGENCY PLAN AND EMERGENCY PROCEDURES FOR MANAGEMENT OF HAZARDOUS MATERIALS/WASTE

3.0 SPECIFIC RESPONSE PROCEDURES

- Notify the management immediately and paramedics shall be called if required. If necessary, the injured person will be properly transported to the appropriate medical facility.
- If exposure to a hazardous material or waste is involved, a copy of the MSDS or waste manifest, together with any appropriate data, will be sent along, and experienced personnel shall be kept available for consultation.

3.3 EMERGENCY RESPONSE PROCEDURES IN CASE OF EARTHQUAKE

- Do not evacuate while earthquake is in progress. Move away from glass and windows and seek shelter under sturdy equipment or in doorways.
- After the earthquake, walk to your evacuation exit. Do not stop to pick up personal belongings.
- When safe to do so, proceed to assembly location noted on evacuation maps. Supervisors shall conduct headcount.

3.4 EMERGENCY RESPONSE PROCEDURES IN CASE OF SPILLAGE OR DISCHARGE OF HAZARDOUS WASTES OR HAZARDOUS MATERIALS

- The employee shall immediately contact the work site supervisor or maintenance facility manager.
- The supervisor shall immediately contact the Emergency Coordinator and provide the known details of the spill.
- The supervisor shall follow instructions of the Emergency Coordinator involving evacuation and contacting the police and fire departments. The supervisor shall maintain control of the situation until the Emergency Coordinator arrives at the scene.
- The Emergency Coordinator shall identify the material involved, and immediately assess the hazards involved with coming in contact with or handling the material. Action should be immediately taken to ensure that the material does not come in contact with incompatible or reactive material.



CONTINGENCY PLAN AND EMERGENCY PROCEDURES FOR MANAGEMENT OF HAZARDOUS MATERIALS/WASTE

3.0 SPECIFIC RESPONSE PROCEDURES

- The Emergency Coordinator will determine what response should be taken and will instruct the hazardous materials response trained employees. The following should be followed depending on the type of hazardous waste release:
 - a) **Waste Spill (not Reaching Surface Waters).** In the event of a spill that does not have the potential of reaching surface waters or other environmentally sensitive areas, the waste may be contained by sandbags, earth or absorbents. If a spill occurs, the following action will be taken:
 - i. Minor spills (15 gallons or less):
 - Provide materials to contain the spill;
 - Contain liquid in as small an area as possible;
 - Once the spill is contained, remove the spilled material and contaminated absorbents. Dispose of wastes properly;
 - Clean the area of the spill with an appropriate cleaner. Dispose of wastes properly;
 - The Emergency Coordinator will inspect the area prior to resuming operations at that location; and
 - Ensure that the cause of the spill will be corrected.
 - ii. Major spills (in excess of 55 gallons):
 - Any qualified person discovering a spill shall determine the source, and location of the spill, remedy the cause of the spill if possible, and immediately contact the site work supervisor or maintenance facility manager.
 - The supervisor or manager will contact the Emergency Coordinator and will assist in contacting appropriate emergency response agencies as determined necessary by the Emergency Coordinator.
 - iii. The Emergency Coordinator shall:
 - Remove all non-essential personnel and equipment from the vicinity of the spill;



CONTINGENCY PLAN AND EMERGENCY PROCEDURES FOR MANAGEMENT OF HAZARDOUS MATERIALS/WASTE

3.0 SPECIFIC RESPONSE PROCEDURES

- Provide equipment and supplies appropriate for use in responding to the incident;
 - Utilize adequately trained personnel and equipment and/or allow fire department personnel to contain the spill in the smallest possible area. Absorbents, earth, and/or containment boom material may be used, as appropriate;
 - If a spill could impact public health/safety or the environment outside the NCRA property, notify the State Office of Emergency Services, the California EPA Department of Toxic Substances Control and the local fire department immediately.
 - Remove the waste as quickly as possible using pumps or other equipment.
 - Dispose of wastes properly;
 - Ensure that the area of the spill is cleaned; and
 - Ensure that any equipment, or facilities impacted by the spill are decontaminated and thoroughly inspected prior to use.
- b) **Spill to Surface Waters.** Spills may occur which contaminate standing water on-site or which flow off-site and pose a contamination threat to surface waters. In the event of such a spill, the actions described above shall apply with the following additions:
- i. Spills Contained On-site:
 - After containment of the spill and contaminated water, the mixture shall be sampled and transferred to the appropriate waste receiving tank for subsequent treatment, when treatment is feasible.
 - The liquid mixture may be recovered by a vacuum truck or an appropriate absorbent and transferred to an off-site treatment or disposal facility.
 - ii. Spills Reaching Off-site Surface Waters



CONTINGENCY PLAN AND EMERGENCY PROCEDURES FOR MANAGEMENT OF HAZARDOUS MATERIALS/WASTE

3.0 SPECIFIC RESPONSE PROCEDURES

- In the event of a spill reaching surface water off-site (e.g., a spill to the adjacent roadside drainage system), the person discovering the spill shall immediately attempt to contain it. As soon as possible, the Emergency Coordinator shall be notified, and the source of the spill shall be investigated and remedied.
- iii. The Emergency Coordinator shall:
- In addition to the actions and notifications for a major spill described above, the Emergency Coordinator shall notify the Regional Water Quality Control Board whenever a spill contacts or threatens to contact surface waters off-site.
- c) **Container Spills and Leakage.** Containers of hazardous materials or waste will be inspected upon arrival and at least once per week while in storage. If a container is found to be leaking, transfer the contents to another approved container, or overpacking in an approved over-pack container. Spills and leaks will be minimized by correcting the problem as soon as possible after discovery. Any spilled material will be sent off-site for disposal at a permitted facility.



CONTINGENCY PLAN AND EMERGENCY PROCEDURES FOR MANAGEMENT OF HAZARDOUS MATERIALS/WASTE

3.0 SPECIFIC RESPONSE PROCEDURES

This page left blank intentionally



4.0 EMERGENCY EQUIPMENT

4.1 FIRE RESPONSE

Dry chemical, CO₂, foam and/or Halon fire extinguishers are located in the maintenance facilities.

4.2 PERSONAL PROTECTIVE EQUIPMENT

The following is a list of the personal protective equipment which is available to the Emergency Response Team in case of an emergency.

- 1) Chemical-resistant plastic eye glasses;
- 2) Chemical-resistant rubber boots;
- 3) Chemical-resistant gloves;
- 4) Chemical-resistant aprons;
- 5) Chemical-resistant respirators.

4.3 SAFETY AND DECONTAMINATION STATIONS

Safety/decontamination stations are located at the maintenance facilities.

Emergency showers and/or eyewash stations are provided for decontamination of personal. Solvent cleaners and detergents are provided for decontamination of equipment and facilities as necessary.

4.4 SPILL CONTROL EQUIPMENT

Absorbent materials and spill cleanup equipment are available at the maintenance facilities. These materials include:

- Absorbent material ("floor dry", clay like material, etc.); and
- Neutralizing agents (lime).

Portable pumps may also be available for recovery of spilled liquids.



CONTINGENCY PLAN AND EMERGENCY PROCEDURES FOR MANAGEMENT OF HAZARDOUS MATERIALS/WASTE

4.0 EMERGENCY EQUIPMENT

Forklifts may be available for moving palletized absorbent materials and removing containerized spill clean up residues.

4.5 COMMUNICATION EQUIPMENT

During normal operating hours, telephone service is available at the maintenance facilities. Both the Emergency Coordinator and his alternate are provided with cell phones that may be used to contact them at any time.

4.6 EMERGENCY MEDICAL SUPPLIES

Emergency medical equipment including first aid and trauma kits are available at the maintenance facilities.

4.7 EMERGENCY LIGHTING

Emergency lighting is available throughout the maintenance facilities. A portable generator is available from an off-site supplier, if needed.

4.8 WATER SUPPLY

An adequate supply of water is available for emergency situations.

4.9 INSPECTION AND MAINTENANCE OF EMERGENCY EQUIPMENT

Emergency equipment is inspected and maintained on a regular basis in accordance with the manufacturer's recommendations.



5.0 EVACUATION PLAN

5.1 SIGNALS

The primary method of emergency alarm notification is verbal communication.

5.2 EVACUATION OF FACILITY PERSONNEL

Every employee is made aware of the layout of the maintenance facilities and work sites. An evacuation plan is displayed at the maintenance facilities or communicated during safety meeting.

Once evacuation has taken place, supervisors will take the headcount at the congregating areas and will report to the Emergency Coordinator. The Emergency Coordinator will determine if everyone has been accounted for, and will report to the appropriate authorities.

5.2.1 Facility Evacuation Criteria

In the event that a hazardous waste incident would pose an imminent threat to personnel health, life or safety, the Emergency Coordinator will evacuate the facility/site or portions of the facility/site affected by the incident. If evacuation is warranted, the Emergency Coordinator will advise local public safety agencies of the potential threat to persons in the vicinity of the facility. In all cases when local fire or police departments respond, the Emergency Coordinator shall cooperate fully and comply with their instructions to the best of his/her ability.



**CONTINGENCY PLAN AND EMERGENCY PROCEDURES FOR
MANAGEMENT OF HAZARDOUS MATERIALS/WASTE**

5.0 EVACUATION PLAN

This page left blank intentionally



CONTINGENCY PLAN AND EMERGENCY PROCEDURES FOR MANAGEMENT OF HAZARDOUS MATERIALS/WASTE

6.0 ADDITIONAL RAILROAD SAFETY REQUIREMENTS

6.0 ADDITIONAL RAILROAD SAFETY REQUIREMENTS

In addition to the contingency and emergencies procedures identified above for the management of hazardous materials and waste, NCRA and their operator shall comply with all appropriate Federal Railroad Administrations (FRA) and California Public Utilities Commission (CPUC) regulations. Therefore it is also the responsibility of the Emergency Coordinator to understand and implement the necessary FRA and CPUC requirements.



CONTINGENCY PLAN AND EMERGENCY PROCEDURES FOR MANAGEMENT OF HAZARDOUS MATERIALS/WASTE

6.0 ADDITIONAL RAILROAD SAFETY REQUIREMENTS

**Table 6-1
Emergency Response Contact Information**

Entire NWP Line

NCRA Emergency Coordinator Number

NCRA Alternative Emergency Coordinator Number

Emergency	911 24 Hour Number
Summit Signal	(877) 697-7245 24 Hour Number
California Public Utilities Commission	(415) 703-2186 24 Hour Number
Federal Railroad Administration	(800) 424-0201 24 Hour Number
Environmental Protection Agency	(415) 974-8131
National Response Center	(800) 424-8802
California Department of Toxic Substances Control	(818) 551-2800 Dial "0", ask for Operator
California Highway Patrol	(323) 980-4600 or 911
Office of Emergency Services	(800) 852-7550 or 916-845-8911
Caltrans	(213) 897-0383 24 hour Number (909) 396-2000

MP 62.0 (Lombard) to MP67.7 (just south of Skaggs Island Road): Napa County

Napa County Dispatch Center

Sheriff (707) 253-0911 24 Hour Number

American Canyon Police/Fire (707) 963-9636



**CONTINGENCY PLAN AND EMERGENCY PROCEDURES FOR
MANAGEMENT OF HAZARDOUS MATERIALS/WASTE**

6.0 ADDITIONAL RAILROAD SAFETY REQUIREMENTS

**Table 6-1 (Continued)
Emergency Response Contact Information**

**MP67.7 to MP29.0 (just south of Black Point Bridge): Sonoma County
and Sonoma County Sheriff's Dept.**

Fire	911
Police	911 Land Line or (707) 565-2121 Cell Phone

MP29.0 to MP33.5 (San Antonio Creek): Marin County

Sheriffs Dept. dispatches emergency services for 9 fire agencies and 6 law enforcement agencies.

Fire	911
Police	911 Land Line or (415) 472-0911 Cell Phone

**MP33.5 to MP37.2 (Haystack Drawbridge): Sonoma County
and Sonoma County Sheriffs Dept.**

Fire	911
Police	911 Land Line or (707) 565-2121 Cell Phone

MP37.2 to MP41.9 (north of Corona Road): City of Petaluma

REDCOM

Any Emergency	911 land line or (707) 762-4545 Cell Phone
---------------	---



**CONTINGENCY PLAN AND EMERGENCY PROCEDURES FOR
MANAGEMENT OF HAZARDOUS MATERIALS/WASTE**

6.0 ADDITIONAL RAILROAD SAFETY REQUIREMENTS

**Table 6-1 (Continued)
Emergency Response Contact Information**

MP41.9 to MP44.8 (Railroad Avenue): Sonoma County

Sheriffs Dept., Rancho Adobe Fire District, and Sonoma County Dept. of Emergency Services.

Police	911 land line or (707) 565-2121 Cell Phone
Fire/Medical/Ambulance	911 or (707) 576-1365 Cell Phone

Also, from a cell phone, you may call directly the Sonoma County Dept. of Emergency Services at 707-568-5933; this is an upstairs dispatch room in Santa Rosa.

MP45.8 to MP46.3 (north of Cotati Avenue): City of Cotati

Cotati Police Dept. and Rancho Adobe Fire District

Police	911 Land Line or (707) 792-4611 Cell Phone
Fire/Medical/Ambulance by Adobe	911 or (707) 576-1365 Cell Phone

**MP44.8 (Railroad Avenue) to MP45.8 and MP46.3 to MP48.7 (US 101 Overpass):
City of Rohnert Park**

City of Rohnert Park Dept. of Public Safety.

Any Emergency	911 Land Line or (707) 584-2612 Cell Phone
---------------	---

**MP48.7 to MP50.8 (just north of West Robles Avenue.): Sonoma County
and Sonoma County Sheriff's Dept.**

Fire	911
Police	911 Land Line or (707) 565-2121 Cell Phone



**CONTINGENCY PLAN AND EMERGENCY PROCEDURES FOR
MANAGEMENT OF HAZARDOUS MATERIALS/WASTE**

6.0 ADDITIONAL RAILROAD SAFETY REQUIREMENTS

**Table 6-1 (Continued)
Emergency Response Contact Information**

**MP50.8 to MP57.5 (San Miguel Ave.): City of Santa Rosa
City of Santa Rosa Fire and Police Departments.**

Fire	911 Land Line or (707) 568-1365 Cell Phone
Police	911 Land Line or (707)528-5222 Cell Phone

**MP57.5 to MP62.9 (Windsor River Road): City of Windsor
City of Windsor Fire Protection District and Sonoma County Sheriffs Dept.**

Any Emergency	911 land line or (707) 565-2121 Cell Phone
---------------	---



**CONTINGENCY PLAN AND EMERGENCY PROCEDURES FOR
MANAGEMENT OF HAZARDOUS MATERIALS/WASTE**

6.0 ADDITIONAL RAILROAD SAFETY REQUIREMENTS

This page left blank intentionally